

2019 ALBACORE NATIONALS**OCT. 12-14****SAILING INSTRUCTIONS****1 RULES**

- 1.1 The regatta will be governed by the rules as defined in the current Racing Rules of Sailing (RRS) for 2017-2020 and these Sailing Instructions.

2.1 ELIGIBILITY AND ENTRIES

- 2.1 See the Notice of Race.

3 NOTICE TO COMPETITORS

- 3.1 Notices to competitors will be posted on the official notice board located on the East window of the WRSC clubhouse

4 SIGNALS MADE ASHORE AND ON THE WATER

- 4.1 Signals made ashore will be displayed from the flagpole located at WRSC. If a postponement (AP) is signaled ashore, the warning signal will be made not less than 30 minutes after AP is lowered. Signals such as designating a racing area or number of races may be given on the water by displaying flag L with one sound. .

5 SCHEDULE OF EVENTS

- 5.1 Several races may be sailed on any day at the discretion of the race committee (no upper limit). The warning signal for the first race of each day scheduled as indicated below.
- 5.2
- | | |
|--------------|---|
| Sat. Oct. 12 | 1130 Competitors' Meeting
1330 Warning Singal for Race 1, other races to follow |
| Sun. Oct. 13 | 1000 Warning Signal for 1 st race of the day, other races to follow |
| Mon. Oct. 14 | 1000 Warning Signal for 1 st race of the day, other races to follow
1300 No races will be started after this time, awards to follow |
- 5.3 Number of Races: There is no limit to the number of races. The committee will attempt to maximize racing for the conditions available.

6 CLASS FLAGS

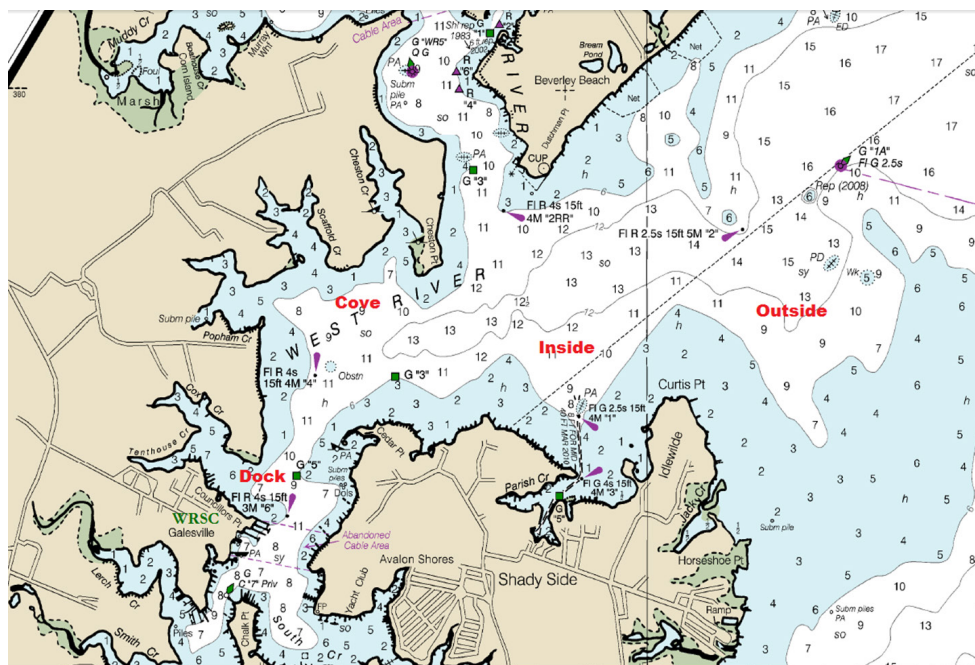
- 6.1 Class flags will show the insignia or as described at the competitor's meeting.

7 RACING AREA

- 7.1 The venue shall be finalized by the RC on each race day. For the Albacore fleet, preferred location depends on weather conditions for the day.

2019 ALBACORE NATIONALS SI's

7.2



8 THE COURSES

8.1 The course will be as shown in Appendix C.

9 MARKS

9.1 The marks will be as described in Appendix C.

10 THE START

10.1 The starting line will be between a staff displaying a yellow flag on the RC signal boat and the course side of the port-end starting mark to be left to port.

11 THE FINISH

11.1 The finishing line will be between a staff displaying an blue flag on the race committee vessel and the mark positioned near the bow of signal boat.

12 TIME LIMITS

12.1 The first boat must finish within 60 minutes

12.2 Boats failing to finish within 30 minutes after the first boat sails the course and finishes will be scored DNF. This changes RRS 35.

13 PROTESTS AND REQUESTS FOR REDRESS

13.1 Protest Forms are available at the in the board room. Protests and requests for redress or reopening shall be delivered to the PRO within one hour after the signal boat returns to the dock. Competitors intending to file a protest or request for redress shall advise the Race Committee as soon as practicable after finishing. The protest time limit and a list of protests and requests received will be posted on the notice board. Hearings will be held as soon as possible after racing each day in the clubhouse boardroom.

2019 ALBACORE NATIONALS SI's

14 SCORING

- 14.1** See the Notice of Race

15 PRIZES

- 15.1** See the Notice of Race

16 SAFETY REGULATIONS

- 16.1** Before starting their first race of the day, all competitors' boats shall sail astern the signal boat, give their sail number and be acknowledged by the race committee.
- 16.2** A boat that retires from a race shall notify the race committee as soon as possible.

17 SUPPORT BOATS

- 17.1** Support boats shall be marked with the letters WRSC or as described at the competitor's meeting.

18 RADIO COMMUNICATION

- 18.1** Except in an emergency, a boat that is racing shall not make voice or data transmissions and shall not receive voice or data communications that is not available to all boats. This restriction also applies to mobile telephones but does not apply to communications to notify the RC that a competitor is leaving the race area.

19 DISCLAIMER OF LIABILITY

- 19.1** Competitors participate in the regatta entirely at their own risk. See RRS 4, Decision to Race. The organizing authority will not accept any liability for material damage or personal injury or death sustained in conjunction with or prior to, during, or after the regatta.

APPENDIX C

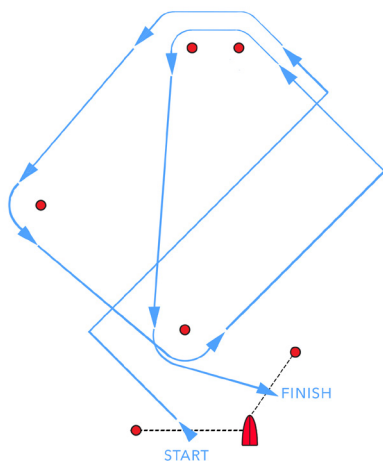
1 COURSE

- 1.1** Courses will be Windward-Leeward designated by the letter W or Olympic Triangles designated by the letter O posted on the starboard side of the signal boat. The courses will be as drawn below. The number of legs will be designated after the letter (i.e. "W4" indicates windward, leeward, windward, then finish to leeward). The course will be posted prior to the Preparatory signal.

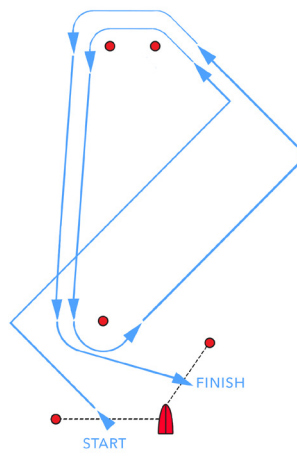
- 1.2** If only one of the Leeward gate marks is set, it shall be rounded on port.

2.1 MARKS

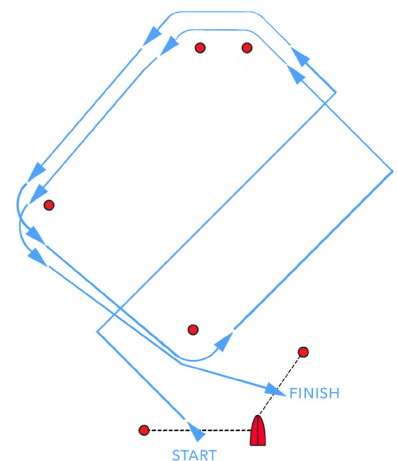
- 2.1** Small round red/orange marks will be used for the offset, starting, and finish pins. Yellow cylinders will be used as the windward, leeward, and triangle marks. An orange trapezoid shall be used as the change of course mark.
- 2.2** The marks shall be as described above unless otherwise described at the competitor's meeting.



O - Olympic Course



W - Windward/leeward Course



T - Triangle Course