

**2021 Int. 505 EAST COAST CHAMPIONSHIPS MAY 21-23****SAILING INSTRUCTIONS****1 RULES**

- 1.1** The Regatta will be governed by the current Racing Rules of Sailing, together with the rules of the participating classes and any additional sailing instructions to be issued at the competitors' meeting.

**2.1 NOTICE TO COMPETITORS**

- 2.1** Notices to competitors will be posted on the official notice board located on the East window of the WRSC clubhouse

**3 SIGNALS MADE ASHORE**

- 3.1** Signals made ashore will be displayed from the flagpole located at WRSC. When flag AP is displayed ashore, '1 minute' is replaced with 'not less than 1 hour' in the race signal AP.

**4 SCHEDULE**

- 4.1** Wednesday  
All Day Competitors are welcome to set up and practice at WRSC.
- 4.2** Thursday  
1100-1700 Practice  
1700-1900 Measurement
- 4.3** Friday  
0800 Measurement opens.  
1000 Competitors Meeting, Registration and Measurement close.  
1130 First warning signal
- 4.4** Saturday  
1030 First warning signal  
1800 No races will start after this time
- 4.5** Sunday  
1030 First warning signal  
1500 No races will start after this time

Awards to follow after racing at an outdoor, socially distant, masks required gathering.

- 4.6** Number of Races:  
There is no limit to the number of races. The RC will attempt to maximize racing for the conditions available.

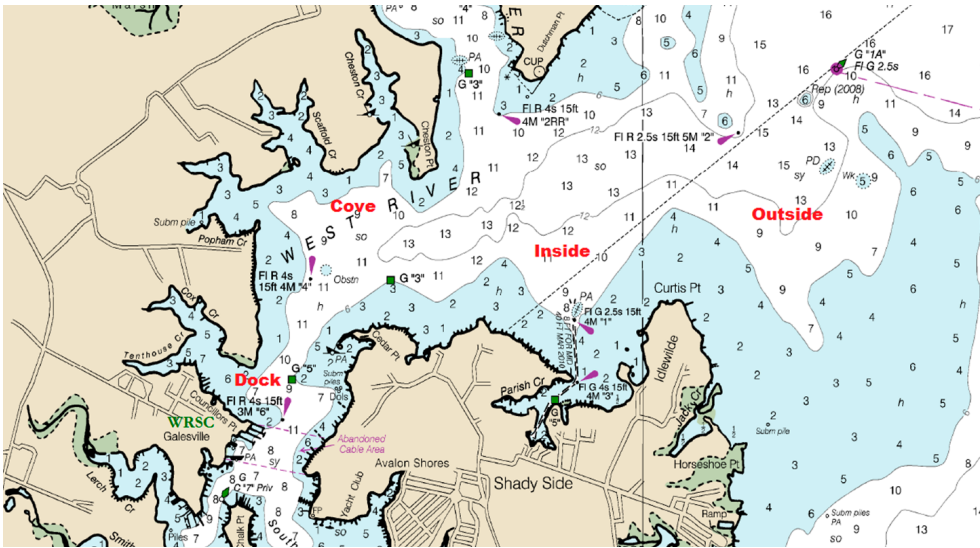
# 2021 Int. 505 EAST COAST CHAMPIONSHIPS

## 5 CLASS FLAGS

5.1 Class flags will be the respective insignia or as described at the competitor's meeting.

## 6 RACING AREA

6.1 The venue shall be finalized by the RC on race day. WRSC typically races the 505 fleet on the Inside or Outside Courses.



## 7 THE COURSES

7.1 The course will be as shown in Appendix A. .

## 8 MARKS

8.1 The marks will be as described in Appendix A.

## 9 THE START

9.1 Starts will be a Gate (Rabbit) start unless otherwise announced by the RC as a Fixed Start.

9.2 Fixed starting line: The starting line will be between a staff displaying a yellow flag on the RC signal boat and the course side of the port-end starting mark to be left to port.

9.3 Gate (Rabbit) start: The following procedure will be used:

a The first Rabbit of the regatta will be chosen at random at the competitor's meeting.

b The Gate Boat will be trailing the Rabbit as closely as possible during the gate start.

c The Rabbit shall round the starting during the five seconds between the starting signal and five seconds after the starting signal.

d The gate shall be open for X seconds as posted on the RC Boat. The default of 60 seconds will be used if no seconds are shown on RC.

e After X seconds, the Gate Boat will stop, turn off engine, and drift signifying the gate is closed.

# 2021 Int. 505 EAST COAST CHAMPIONSHIPS

f Any boat that has not gated at this point will need to drop down to pass through the pin and Gate Boat.

g The gate boat shall drift for 60 seconds. All boats failing to drop down to pass through the pin and the gate boat has not started.

9.4 Boats whose warning signal has not been made shall avoid the starting area during the starting sequence for other races.

9.5 Note that the order of the starts may not be constant.

## 10 THE FINISH

10.1 The finishing line will be between a staff displaying an orange flag on the race committee vessel and the course side of the finishing mark.

## 11 TIME LIMITS

11.1 The first boat must finish within 90 minutes

11.2 Boats failing to finish within 20 minutes after the first boat sails the course and finishes will be scored DNF without a hearing. This changes RRS 35, A4, and A5.

## 12 PROTESTS AND REQUESTS FOR REDRESS

12.1 Protest Forms are available at the bar. Protests and requests for redress or reopening shall be delivered to the PRO within one hour after the RC returns to the dock.

## 13 SCORING

11.1 One (1) race is required to be completed to constitute a series

a When fewer than 5 races have been completed, a boat's series score will be the total of her race scores.

b When from 5 to 11 races have been completed, a boat's series score will be the total of her race scores excluding her worst score.

c When 12 or more races have been completed, a boat's series score will be the total of her race scores excluding her two worst scores.

## 14 SAFETY REGULATIONS

14.1 Before starting their first race of the day, all competitors' boats shall sail astern the signal boat, give their sail number and be acknowledged by the race committee.

14.2 A boat that retires from a race shall notify the race committee as soon as possible.

## 15 SUPPORT BOATS

15.1 Support boats shall be marked with the letters WRSC or as described at the competitor's meeting.

# 2021 Int. 505 EAST COAST CHAMPIONSHIPS

## 16.1 RADIO COMMUNICATION

16.1 Except in an emergency, a boat that is racing shall not make voice or data transmissions and shall not receive voice or data communications that is not available to all boats. This restriction also applies to mobile telephones but does not apply to communications to notify the RC that a competitor is leaving the race area.

## 17 PRIZES

17.1 Prizes will be given to the top three finishers.

## 18 DISCLAIMER OF LIABILITY

18.1 Competitors participate in the regatta entirely at their own risk. See RRS 4, Decision to Race. The organizing authority will not accept any liability for material damage or personal injury or death sustained in conjunction with or prior to, during, or after the regatta.

## 19 ON LAND SAFETY REGULATIONS

19.1 All competitors must follow all WRSC Covid-19 Policies while on WRSC property. The main policy, "WRSC Covid-19 Safety Plan & Guidelines," can be found on the regatta webpage below. Guiding signage can be found around the property as needed.

[westriversc.com/2021ecc](http://westriversc.com/2021ecc)

19.2 All competitors are required to sign and turn in (either through digital upload on the regatta webpage or a printed version handed in the day of) WRSC's US Sailing Covid-19 Liability Form. The form can be found on the regatta webpage (link below).

[westriversc.com/2021ecc](http://westriversc.com/2021ecc)

## APPENDIX A

### 1 COURSE

1.1 Courses will be Windward-Leewards as drawn below designated by the letter W posted on the starboard side of the signal boat. The number of legs will be designated after the letter (i.e. "W4" indicates windward, leeward, windward, then finish to leeward). The course will be posted prior to the Preparatory signal.

1.2 All marks shall be rounded on port.

1.3 RC can change the Leeward Mark into a Leeward Gate.

1.4 A "W5" designates that there will be a finish line above the windward marks.

### 2.1 MARKS

2.1 Small round red/orange marks will be used for the offset, starting, and finish pins. Yellow cylinders will be used as the windward and leeward marks. An orange trapezoid shall be used as the change of course mark.

2.2 The marks shall be as described above unless otherwise described at the competitor's meeting.

