

# 91<sup>ST</sup> ANNUAL LABOR DAY REGATTA

**SEPT. 5-6, 2020**

## SAILING INSTRUCTIONS

### 1 RULES

- 1.1 The regatta will be governed by the rules as defined in Racing Rules of Sailing.

### 2.1 NOTICE TO COMPETITORS

- 2.1 Notices to competitors will be posted on the official notice board located on the East window of the WRSC clubhouse.

### 3 SIGNALS MADE ASHORE

- 3.1 Signals made ashore will be displayed from the flagpole located at WRSC. When flag AP is displayed ashore, '1 minute' is replaced with 'not less than 1 hour' in the race signal AP.

### 4 SCHEDULE OF EVENTS

- 4.1 Thursday
- |  |                                |
|--|--------------------------------|
| 1900   | Competitor's Meeting via Zoom. |
| Link > <a href="https://virginiatech.zoom.us/j/98027584851">virginiatech.zoom.us/j/98027584851</a> |                                |

Saturday  
0900 Registration closed

First Warning Signal:  
1100 First Warning Signal

The Race Committee (RC) will announce the order of starts for the first race at the competitors' meeting.

- 4.2 Sunday
- |                            |                                     |
|----------------------------|-------------------------------------|
| 1030                       | First warning signal                |
| 1500                       | No races will start after this time |
| Scores will follow racing. |                                     |

- 4.3 Number of Races: There is no limit to the number of races. The committee will attempt to maximize racing for the conditions available.

### 5 CLASS FLAGS

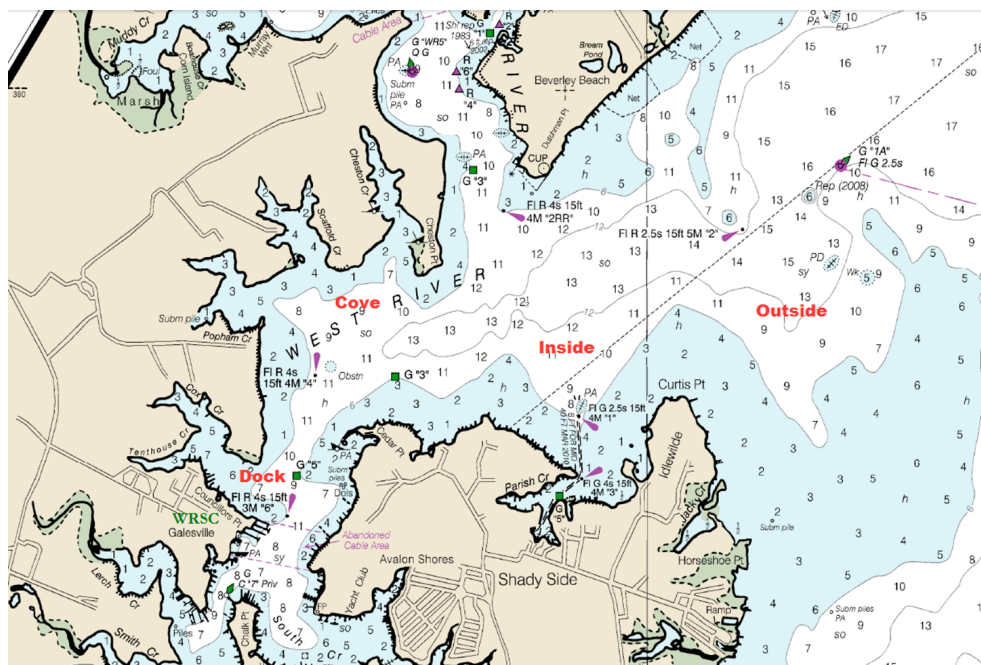
- 5.1 Class flags will be the respective insignia or as described at the competitor's meeting.

### 6 RACING AREA

- 6.1 The venue shall be finalized by the RC on race day. WRSC typically races this event on the inside course.

# 2020 ANNUAL LABOR DAY REGATTA SI's

6.1



## 2020 ANNUAL LABOR DAY REGATTA SI's

- 12.2** Protest Forms are available near the Cranes. Protests and requests for redress or reopening shall be delivered to the PRO within one hour after the RC returns to the dock. The list of protests and requests received will be posted on the notice board. Hearings will be held as soon as possible after racing each day in the clubhouse boardroom.
- 13 SCORING**
- 11.1** One (1) race is required to be completed to constitute a series
- a** When fewer than 5 races have been completed, a boat's series score will be the total of her race scores.
- b** When from 5 to 11 races have been completed, a boat's series score will be the total of her race scores excluding her worst score.
- c** When 12 or more races have been completed, a boat's series score will be the total of her race scores excluding her two worst scores.
- 14 ON THE WATER SAFETY REGULATIONS**
- 14.1** Before starting their first race of the day, all competitors' boats shall sail astern the signal boat, give their sail number and be acknowledged by the race committee.
- 14.2** A boat that retires from a race shall notify the race committee as soon as possible.
- 15 SUPPORT BOATS**
- 15.1** Support boats shall be marked with the letters WRSC or as described at the competitor's meeting.
- 16.1 RADIO COMMUNICATION**
- 16.1** Except in an emergency, a boat that is racing shall not make voice or data transmissions and shall not receive voice or data communications that is not available to all boats. This restriction also applies to mobile telephones but does not apply to communications to notify the RC that a competitor is leaving the race area.
- 17 PRIZES**
- 17.1** For each class, prizes will be given to the first-place finisher in classes with three or fewer entries, the first two finishers in classes with six or fewer entries, and the first three finishers in classes with seven or more entries. Prizes for the A-Cat class will be awarded for Foiling and Classic boats as separate classes.
- 17.2** The Billy Heintz Memorial perpetual trophy will be awarded to first place finisher in the class with the largest number of registered competitors.
- 18 DISCLAIMER OF LIABILITY**
- 18.1** Competitors participate in the regatta entirely at their own risk. See RRS 4, Decision to Race. The organizing authority will not accept any liability for material damage or personal injury or death sustained in conjunction with or prior to, during, or after the regatta.

# 2020 ANNUAL LABOR DAY REGATTA

19

## ON LAND SAFETY REGULATIONS

19.1

All competitors must follow the all WRSC Covid-19 Policy while on WRSC property. This policy, "WRSC Covid-19 Safety Plan & Guidelines," can be found on the regatta webpage, [westriversc.com/odweekend](http://westriversc.com/odweekend)

19.2

All competitors are required to sign and turn in (either through digital upload on the regatta webpage or a printed version handed in the day of) WRSC's US Sailing Covid-19 Liability Form. The form can be found on the regatta webpage (link below). [westriversc.com/odweekend](http://westriversc.com/odweekend)

## APPENDIX D

### 1 COURSE

- 1.1 Courses will be either...  
Windward-Leewards as drawn below designated by the letter W posted on the starboard side of the signal boat.

Triangles as drawn below designated by the letter T posted on the starboard side of the signal boat.

### 1.2

The number of legs will be designated after the letter (i.e. "W4" indicates windward, leeward, windward, then finish to leeward). The course will be posted prior to the Preparatory signal.

### 2.1

### 2.1

If only one of the Leeward gate marks is set, it shall be rounded on port.

### MARKS

- 2.2 Small round red/orange marks will be used for the offset, starting, and finish pins.  
Yellow cylinders will be used as the windward and leeward marks.  
An orange trapezoid shall be used as the change of course mark.

The marks shall be as described above unless otherwise described at the competitor's meeting.

